

AnalyzeFMRI: an R package to perform statistical analysis on fMRI

Cécile Bordier, Michel Dojat, Pierre Lafaye de Micheaux

use R 2009

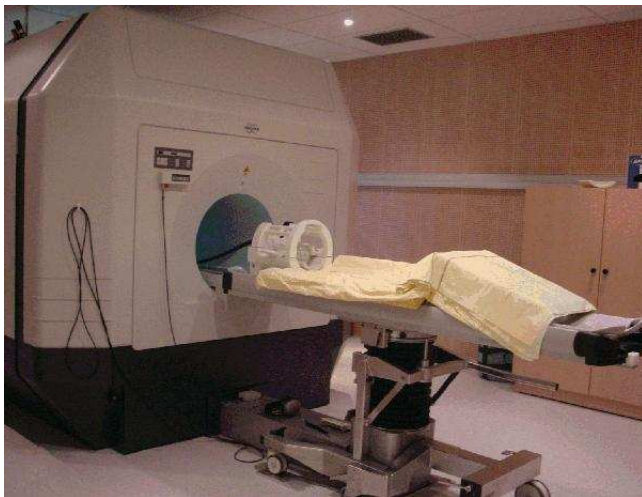
July 9th, 2009

Package R/C : AnalyzeFMRI

- ▶ 2001 J.Marchini
- ▶ 2007 AnalyzeFMRI extension

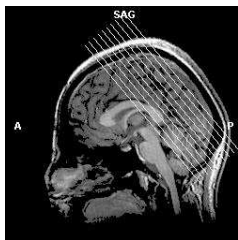
Processing and analysis of large structural Magnetic Resonance Imaging (MRI) and functional MRI (fMRI) datasets

MRI & functional MRI



Non invasive procedure

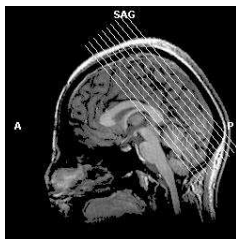
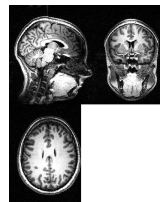
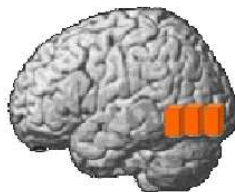
MRI & functional MRI



MRI & functional MRI



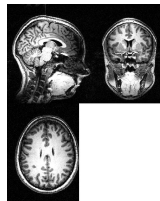
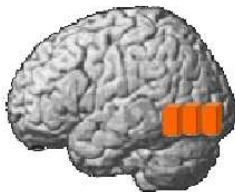
Anatomical



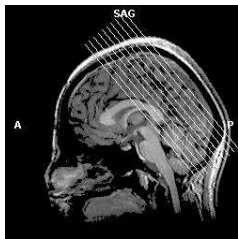
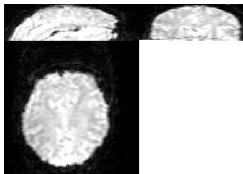
MRI & functional MRI



Anatomical



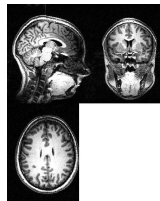
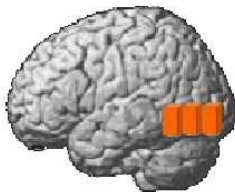
Functional
or EPI



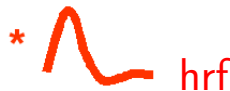
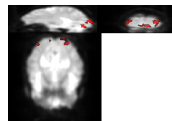
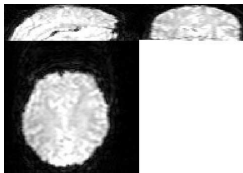
MRI & functional MRI



Anatomical



Functional
or EPI



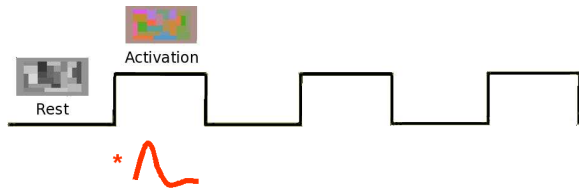
Example of Experiment

Paradigm



Example of Experiment

Paradigm



Example of Experiment

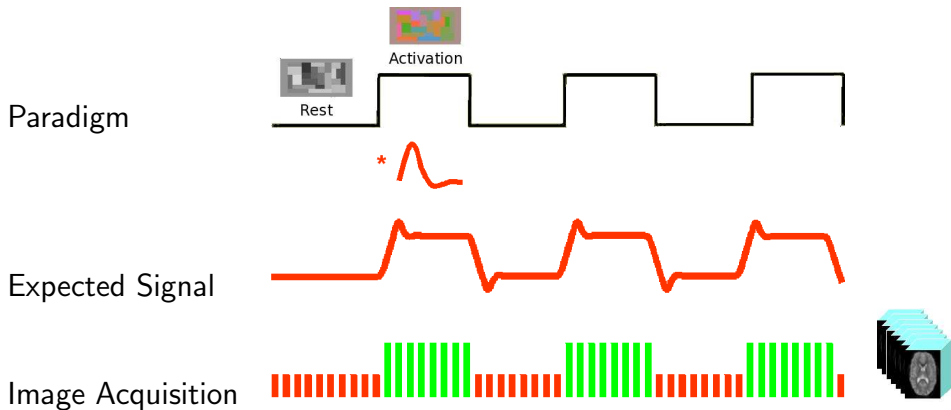
Paradigm



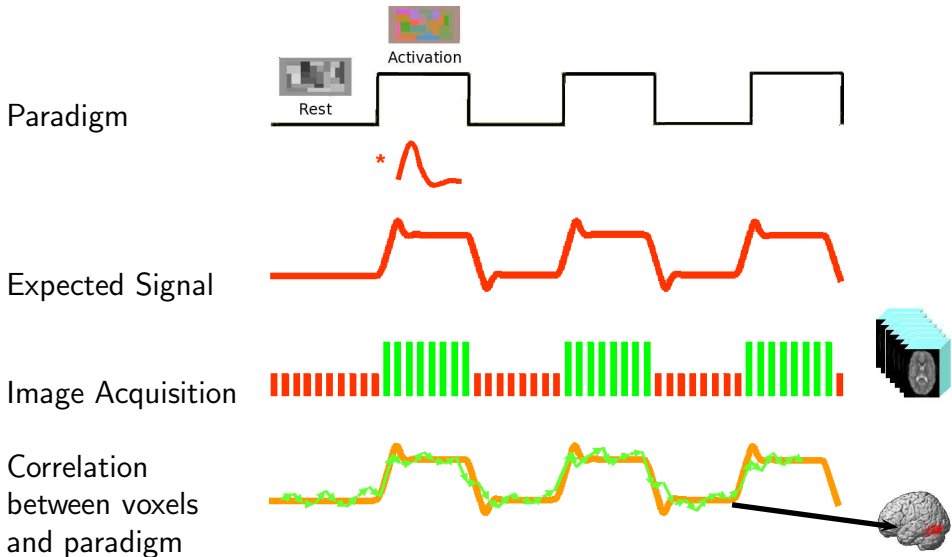
Expected Signal



Example of Experiment



Example of Experiment



Problem & Solution

Problem: Each voxel is a mix of several original signals: ocular movement, heart rate, respiratory cycle, noise...

Solutions: **GLM** : General Linear Model : Linear modelisation of the hemodynamic response during the paradigm

ICA: Independent Component Analysis : exploratory method

Is a computational method for separating a multivariate signal into additive subcomponents supposing the mutual statistical independence of the non-Gaussian source signals

Problem & Solution

Problem: Each voxel is a mix of several original signals: occular movement, heart rate, respiratory cycle, noise...

Solutions: **GLM** : General Linear Model : Linear modelisation of the hemodynamic response during the paradigm

ICA: Independent Component Analysis : exploratory method

Is a computational method for separating a multivariate signal into additive subcomponents supposing the mutual statistical independence of the non-Gaussian source signals

Problem & Solution

Problem: Each voxel is a mix of several original signals: occular movement, heart rate, respiratory cycle, noise...

Solutions: **GLM** : General Linear Model : Linear modelisation of the hemodynamic response during the paradigm

ICA: Independent Component Analysis : exploratory method

Is a computational method for separating a multivariate signal into additive subcomponents supposing the mutual statistical independence of the non-Gaussian source signals

Problem & Solution

Problem: Each voxel is a mix of several original signals: ocular movement, heart rate, respiratory cycle, noise...

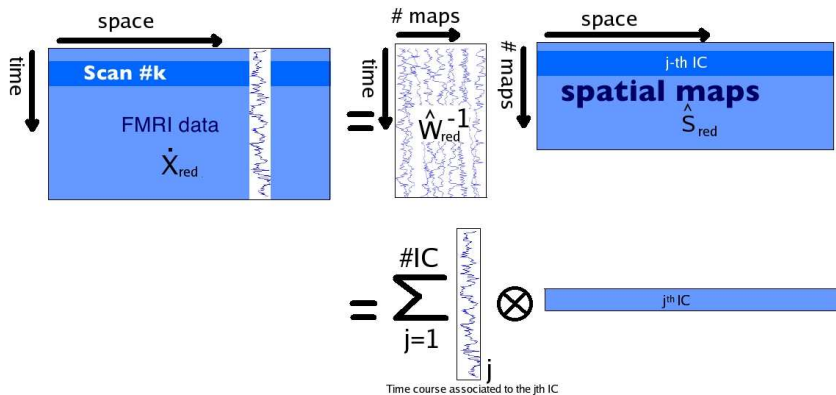
Solutions: **GLM** : General Linear Model : Linear modelisation of the hemodynamic response during the paradigm

ICA: Independent Component Analysis : exploratory method

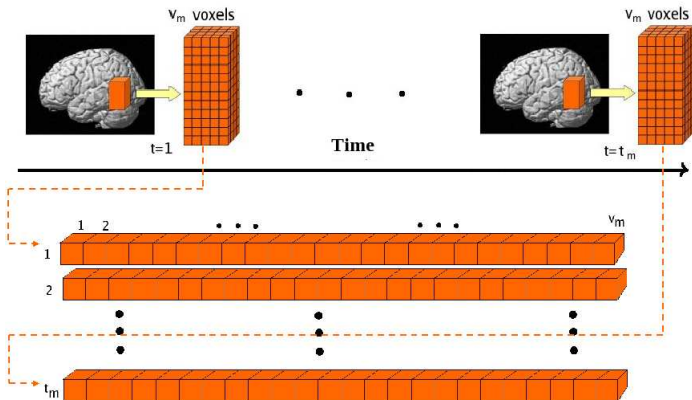
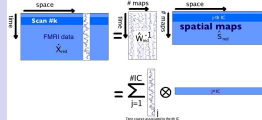
Is a computational method for separating a multivariate signal into additive subcomponents supposing the mutual statistical independence of the non-Gaussian source signals

Spatial ICA

► Spatial decomposition

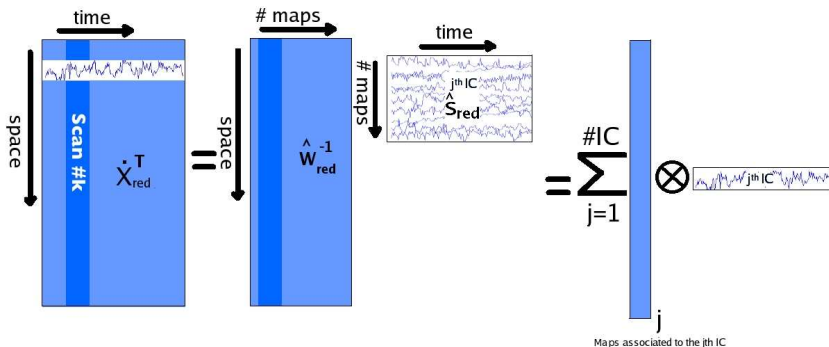


Spatial ICA

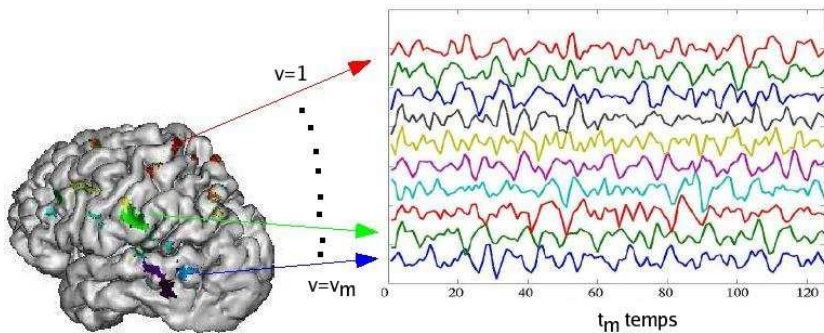
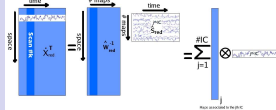


Temporal ICA

▶ Temporal decomposition



Temporal ICA



Temporal ICA

"...Note that TICA is typically much more computationally demanding than SICA for functional MRI applications because of a higher spatial than temporal dimension and can grow quickly beyond practical feasibility. Thus a covariance matrix on the order of N^2 (where N is the number of spatial voxels of interests) must be calculated. A combination of increased hardware capacity as well as more advanced methods for calculating and storing the covariance matrix may provide a solution in the future ..."

Calhoun, Human Brain Mapping, 2001

Volume= 128X128X30 voxels and Time= 240 volumes

Spatial ICA: covariance matrix = $240^2 = 57600$

Temporal ICA: covariance matrix $\approx 500000^2 = 25 * 10^{11}$

Temporal ICA

"...Note that TICA is typically much more computationally demanding than SICA for functional MRI applications because of a higher spatial than temporal dimension and can grow quickly beyond practical feasibility. Thus a covariance matrix on the order of N^2 (where N is the number of spatial voxels of interests) must be calculated. A combination of increased hardware capacity as well as more advanced methods for calculating and storing the covariance matrix may provide a solution in the future ..."

Calhoun, Human Brain Mapping, 2001



**Not available in other software
like FSL**

Temporal ICA

"...Note that TICA is typically much more computationally demanding than SICA for functional MRI applications because of a higher spatial than temporal dimension and can grow quickly beyond practical feasibility. Thus a covariance matrix on the order of N^2 (where N is the number of spatial voxels of interests) must be calculated. A combination of increased hardware capacity as well as more advanced methods for calculating and storing the covariance matrix may provide a solution in the future ..."

Calhoun, Human Brain Mapping, 2001

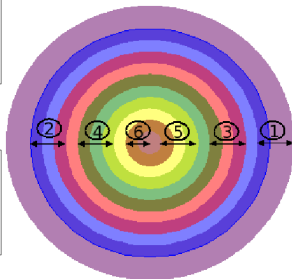
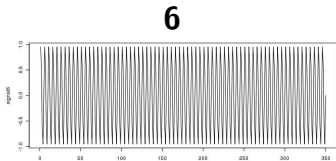
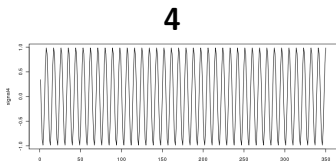
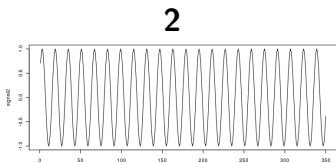


**Not available in other software
like FSL**

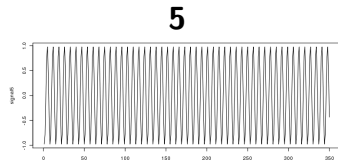
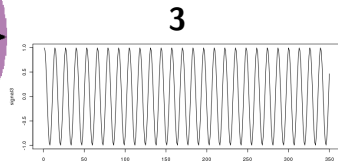
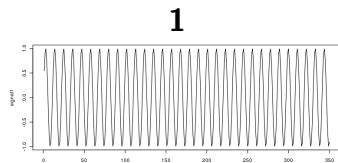


**Possible with the singular value
decomposition (svd)**

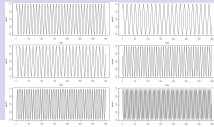
Simulation: sine wave with various frequency



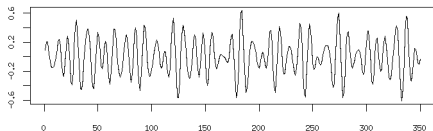
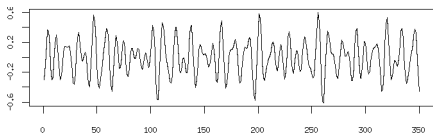
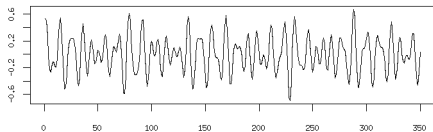
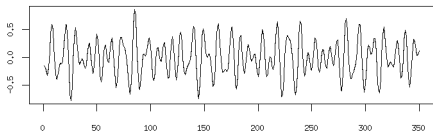
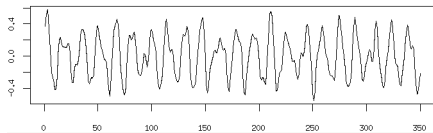
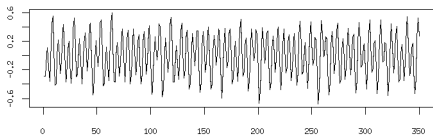
+Gaussian noise
 $S/N=10\%$



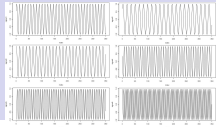
Spatial ICA simulation results



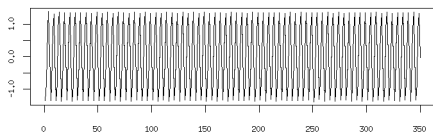
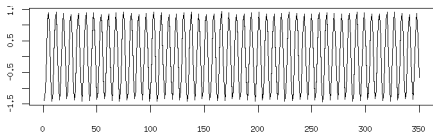
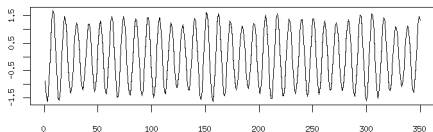
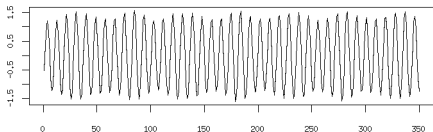
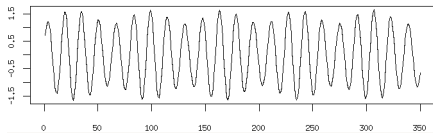
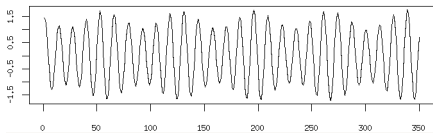
Poor Results



Temporal ICA simulation results

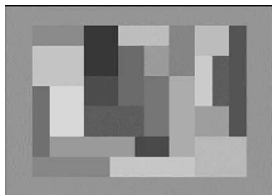


Better Results



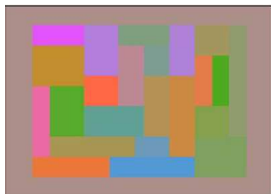
Real fMRI data with the AnalyzeFMRI package

- ▶ Experimental Protocol



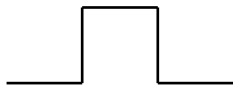
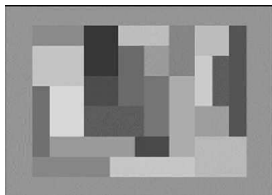
Real fMRI data with the AnalyzeFMRI package

- ▶ Experimental Protocol



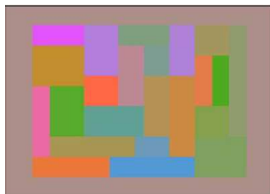
Real fMRI data with the AnalyzeFMRI package

- ▶ Experimental Protocol



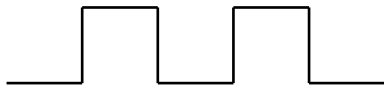
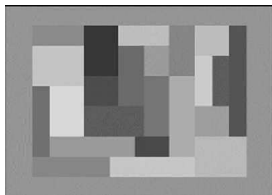
Real fMRI data with the AnalyzeFMRI package

► Experimental Protocol



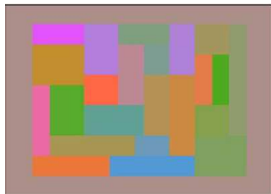
Real fMRI data with the AnalyzeFMRI package

- ▶ Experimental Protocol



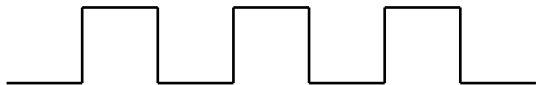
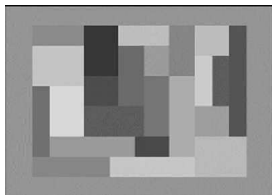
Real fMRI data with the AnalyzeFMRI package

- ▶ Experimental Protocol



Real fMRI data with the AnalyzeFMRI package

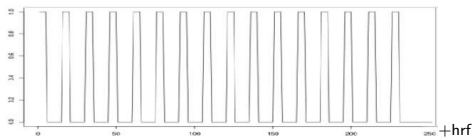
- ▶ Experimental Protocol



...

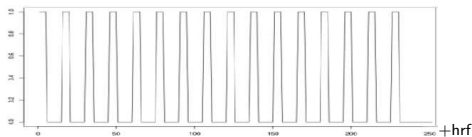
Real fMRI data results with the AnalyzeFMRI package

► Original

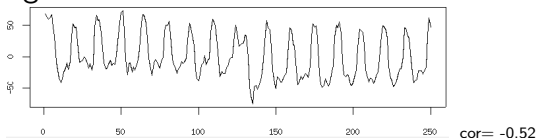


Real fMRI data results with the AnalyzeFMRI package

- ▶ Original

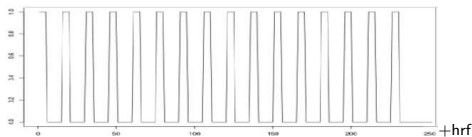


- ▶ Spatial ICA signal result

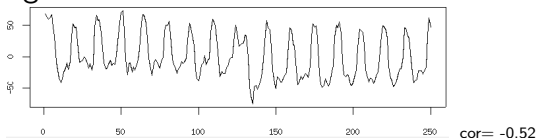


Real fMRI data results with the AnalyzeFMRI package

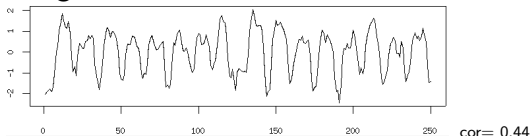
- ▶ Original



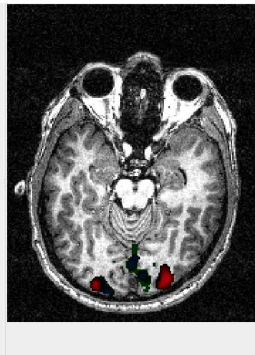
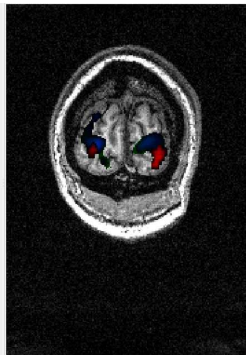
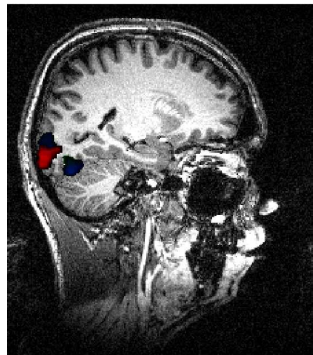
- ▶ Spatial ICA signal result



- ▶ Temporal ICA signal result



Comparison results



Temporal ICA results
Spatial ICA results

Results obtained with spm
general linear model

AnalyzeFMRI Package

Updates :

- ▶ Image Format in the package :

AnalyzeFMRI Package

Updates :

- ▶ Image Format in the package :
 - Existing : Analyze

AnalyzeFMRI Package

Updates :

- ▶ Image Format in the package :
 - Existing : Analyze
 - New : nifti

Updates :

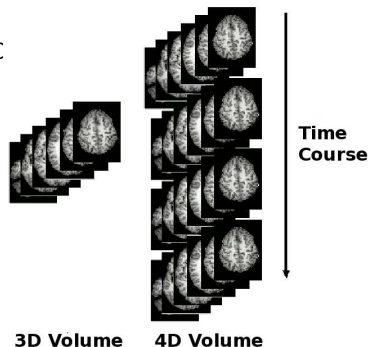
- ▶ Image Format in the package :
 - Existing : Analyze
 - New : nifti
 - Read, write, modify metadata

More than 40 parameters: orientations,
size, subject informations...

Updates :

▶ Image Format in the package :

- Existing : Analyze
- New : nifti
 - Read, write, modify metadata
 - Read, write, convert 3D and/to 4D



AnalyzeFMRI Package

Updates :

▶ Image Format in the package :

- Existing : Analyze
- New : nifti
 - Read, write, modify metadata
 - Read, write, convert 3D and/to 4D
 - Display nifti volume



Updates :

- ▶ Image Format in the package :
 - Existing : Analyze
 - New : nifti

- ▶ ICA
 - Existing : Spatial ICA

AnalyzeFMRI Package

Updates :

▶ Image Format in the package :

- Existing : Analyze
- New : nifti

▶ ICA

- Existing : Spatial ICA
- New : Temporal ICA

AnalyzeFMRI Package

Updates :

▶ Image Format in the package :

- Existing : Analyze
- New : nifti

▶ ICA

- Existing : Spatial ICA
- New : Temporal ICA

Submission to CRAN very soon!

Updates :

▶ Image Format in the package :

- Existing : Analyze
- New : nifti

▶ ICA

- Existing : Spatial ICA
- New : Temporal ICA

Submission to CRAN very soon!

Maintainers: Pierre Lafaye de Micheaux

Cécile Bordier

***Thank you
for
your attention***

